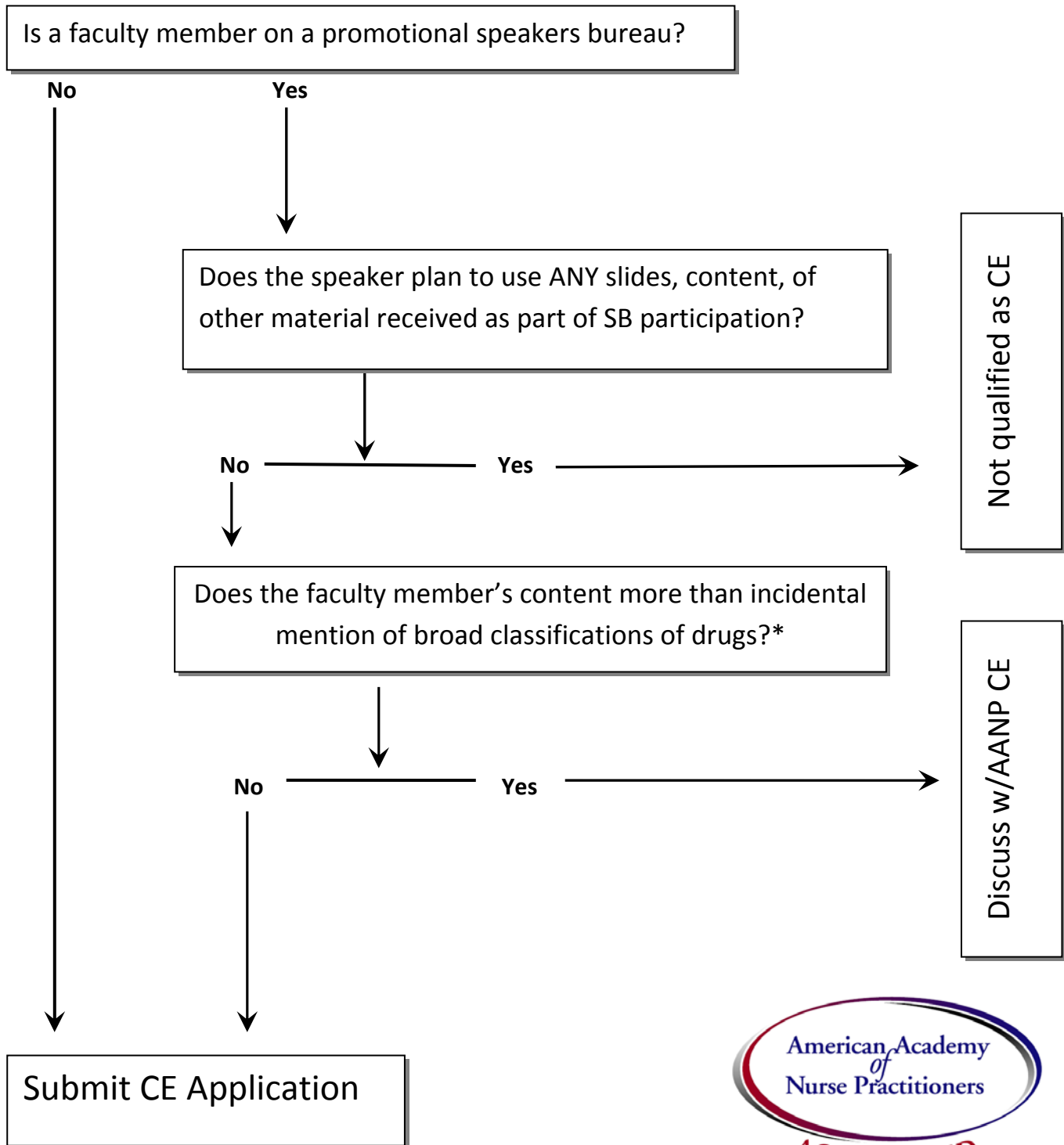


AANP Continuing Education Decision Tree



*Individuals serving on an industry speakers bureau may be considered as faculty for AANP-accredited CE programs on clinical areas other than the general focus of their speakers bureau activities. For topics in the same clinical area as their speakers bureau activities, faculty may be considered for content limited to areas such as disease prevalence, risk factors, diagnosis, and pathophysiology, i.e. not including therapeutic options beyond incidental mention of broad classes of drugs. As always, all conflicts of interest must be resolved prior to accreditation.